



## CONFERENCES AND EVENTS

A prestigious establishment and a professional team ensure the success of your events.

The Jiva Hill Park Hotel is ideal either for business or leisure.

### THE HOTEL

28 Deluxe Bedrooms each with terrace or balcony

6 Private Lodges each with garden and jacuzzi

Gastronomic Restaurant and panoramic terrace

Bar, Lounge with fireplace, Billiards, All-Seasons Garden

Conference facilities, Indoor and Outdoor Training

Heated indoor swimming pool, gym, sauna, hammam, cold water plunge pool, jacuzzi, solarium, Spa and beauty treatments for men and women



## TEAM BUILDING AND INCENTIVES

A wide range of indoor and outdoor activities is available at the Jiva Hill Park Hotel.

- Golf – competition or introduction
- Water sports at the Eurolac
- Yoga lessons
- Tennis tournaments
- Orienteering
- Archery, Paintball
- “Accrobranche” tree climbing
- Mountain biking
- Wine tastings
- Jura Mountains discovery tours



# MEETING AND CONFERENCE ROOMS

A choice of venues is available to suit all types of events: One-day seminars and conferences, cocktail receptions, private dining, New Year's Eve parties, product launches

PLACE	SURFACES m <sup>2</sup>	THEATRE	CLASSROOM	U-SHAPE	COCKTAIL	CONFERENCE
The Hangar	120	110	60	30/38	100	X
The Villa du Lac	62	50	40	20	50	20
The Salon Voltaire	40	X	X	X	X	16
The Jardin Japonais	75	X	X	15	30	15
The Lobby	140	X	X	X	120	X
The Restaurant	115	X	X	X	90	X
The Lounge	55	X	X	X	15	8

## ➤ The Hangar

The Hangar has panoramic views over the Mont Blanc. With a surface of 120 square metres, it can accommodate up to 28 people in a classic U-shape, 38 people in a double U, 48-50 in classroom style and up to 110 people in theatre style.



## ➤ The Villa du Lac

The Villa du Lac has a panoramic terrace and magnificent views over the Mont Blanc, Geneva and Eurolac. With a surface of 62 square metres, it can accommodate 20 people in a U-shape and up to 40 people in classroom style.



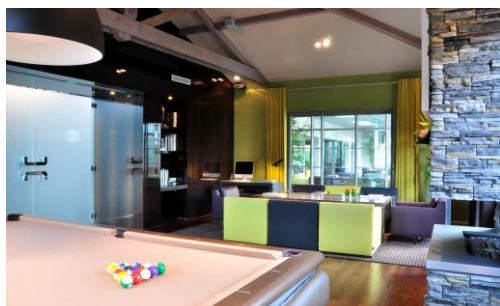
➤ **The Salon Voltaire**

The air conditioned Salon Voltaire is situated next door to the restaurant. With a surface of 40 square metres, it can accommodate up to 16 people in boardroom style.



➤ **The Japanese Garden and the Lounge**

Two totally independent meeting venues situated at the heart of the hotel with a sublime view over the All Seasons Garden. Equipped with all the necessary electronic facilities, they can accommodate between 8-15 people in boardroom style.



## DELEGATE PACKAGES

A perfect environment equals a successful event, and our experienced team will be at hand to advise you on the most suitable package for your function: Classic, Prestige, Sporty or Wellness.

### THE CLASSIC PACKAGE

Fully equipped private meeting room

Morning break: tea, coffee or hot chocolate, fresh fruit juice, mineral water, fresh pastries, seasonal fresh fruit basket

Lunch: 3-course menu (starter, main course, dessert) including mineral water and coffee

Afternoon break: tea or coffee, fresh fruit juice, mineral water, cakes or pastries, fresh fruit

Dinner: 3-course menu (starter, main course, dessert) excluding drinks

Accommodation in a Deluxe bedroom

### THE PRESTIGE PACKAGE

Fully equipped private meeting room

Morning break: tea, coffee or hot chocolate, fresh fruit juice, mineral water, fresh pastries, seasonal fresh fruit basket

Lunch: 3-course menu (starter, main course, dessert) including mineral water and coffee

Afternoon break: tea or coffee, fresh fruit juice, mineral water, cakes or pastries, fresh fruit

Dinner: Champagne aperitif cocktail, menu composed of starter, fish course and meat course, dessert (drinks not included)

Accommodation in a Deluxe bedroom

### **THE SPORTY PACKAGE**

Designed to motivate and encourage team spirit in a recreational and fun way.  
In partnership with *Sportera*, specialists in sporting activities for corporate events:  
Mountain biking, Golf (introduction or competition), Accrobranche tree climbing, Paintball,  
Rally Challenge (minimum number of 10 participants)

### **THE WELLNESS PACKAGE**

As part of your function, this package is designed to re-energize and stimulate your team.  
An innovative way of management and communication.  
Personalized Spa treatments, introduction to Yoga, stress management workshop, muscle toning treatments,  
Nordic walking...

### **ONE-DAY SEMINAR**

Fully equipped private meeting room  
Morning and afternoon breaks  
Lunch with 3-course menu including mineral water and coffee  
Access to the Spa and tennis courts



## **EQUIPMENT AND MATERIALS**

The following equipment is included in your package:

Projection screen, video projector, direct telephone line, flip chart, Wifi access

All our meeting rooms benefit from natural light and outdoor terraces for use during your breaks.

Our team of professionals is always at your disposal if you require additional equipment or specific services.

There is a secure and well-lit car park for 100 vehicles and a dedicated area for buses at the entrance.



## THE RESTAURANT

Our restaurant The Shamwari welcomes you in a fairytale setting whose exotic and spellbinding beauty is reminiscent of South Africa. Come and try our French gastronomic cuisine - reinvented by our Chef Emmanuel Olivier as a unique blend of tradition and modernism. Take a seat on our panoramic terrace and marvel at the majestic view over the Mont Blanc.

Restaurant features:

- Dining room with up to 80 covers
- Set lunch menu starting at €30 per person
- Private dining room for 15 people
- Vegetarian menu
- French and international wine list



**Contact : Valérie MAIRE**  
**Jiva Hill Park Hôtel**  
**Tél : 04 50 28 48 04**  
**[Commerciale@jivahill.com](mailto:Commerciale@jivahill.com)**